

PREFABRICATED BUILDING

Trusted China Steel Structure Supplier



东莞市宏冶钢结构有限公司
Dongguan Hongye Steel Structure Co., Ltd.

Address: Jinjinji Industrial Zone,
Qishi Town, Dongguan City
Postal Code: 523550
Tel: +86-15322877859
Fax: 0769-81928852
Website: www.prefab-steel.com
Email: lee@hy-steel.cn

HONG YE 
Dongguan Hongye Steel Structure Co., Ltd.
东莞市宏冶钢结构有限公司



CATALOG 目录

- 01 | 关于我们
About Us
- 03 | 资质证书
Certifications
- 05 | 我们的工厂
Our factory
- 07 | 生产车间
Production workshop
- 13 | 维护配件
maintenance accessories
- 15 | 工程案例
Engineering case

CATALOG

COMPANY PROFILE

公司简介

东莞市宏冶钢结构有限公司位于东莞市企石镇黄金积工业区，具备国家钢结构材料加工壹级资质，工程安装贰级资质，集设计、制作、销售、安装于一体。先后荣获“国家先进建筑业企业”“信誉AA级企业”。公司拥有3个大型钢结构材料加工厂，占地面积160000平方米，现有工厂制作人员1000多人，安装技术工50多人，中高级工程师以上人员23人，年生产能力120000吨。

先后引进国内外先进的生产设备，进行变截面钢、箱型钢、彩钢板、楼承板、夹芯板和Z、C型钢等钢结构材料生产加工，全面实施ISO9001:2000国际标准质量管理体系，钢结构产品被评为“中国工程建设与采购重点推广产品”。在经营领域中，我公司已处于国内领先水平，具备强大的生产、加工能力、先进的专生产技术和安装技术！公司产品已销往东南亚、非洲和中东还有欧美等等一系列国家与地区！并承担大部分工程的设计及安装。

我司一直“以人为本，以质求存，信誉至上，客户为先”为宗旨，用优秀的产品和良好的售后服务与社会各界携手合作，共同打造钢铁世界精品。

Dongguan Hongye Steel Structure Co., Ltd. is located in Jinjinji Industrial Zone, Qishi Town, Dongguan City. It has the first-class qualification of national steel structure material processing and the second-class qualification of engineering installation, integrating design, production, sales and installation. It has successively won the "National Advanced Construction Enterprise" and "Credit AA-level Enterprise". The company has 3 large-scale steel structure material processing plants, covering an area of 160,000 square meters. At present, the factory has more than 1,000 production personnel, more than 50 installation technicians, and 23 senior engineers and above, with an annual production capacity of 120,000 tons.

It has successively introduced advanced production equipment at home and abroad to carry out the production and processing of steel structure materials such as variable section steel, box-shaped steel, color steel plate, floor deck, sandwich panel and Z and C-shaped steel, and fully implement the ISO9001:2000 international standard quality management system. Steel structure products were rated as "Key Promotion Products of China's Engineering Construction and Procurement". In the business field, our company has been at the leading domestic level, with strong production, processing capabilities, advanced specialized production technology and installation technology! The company's products have been sold to a series of countries and regions in South-east Asia, Africa, the Middle East, Europe and the United States, etc. ! And undertake the design and installation of most projects.

Our company has always been "people-oriented, quality-oriented, reputation first, customer-first" as our tenet, and cooperates with all walks of life with excellent products and good after-sales service to jointly create high-quality steel products in the world.

CERTIFICATIONS

▶ 资质证书



企业营业执照
business license

中国钢结构制造企业资质证书
China Steel Structure Manufacturing
Enterprise Qualification Certificate



ISO9001:2000质量管理体系认证
ISO9001:2000 quality management
system certification

ISO质量体系认证
ISO quality system certification



自营出口权证书
Self-support
export right
certificate



SETSCO检测认证
SETSCO testing
and certification



外观设计专利证书
Design patent certificate



发明专利证书
Invention patent



实用新型专利证书
Utility model
patent certificate

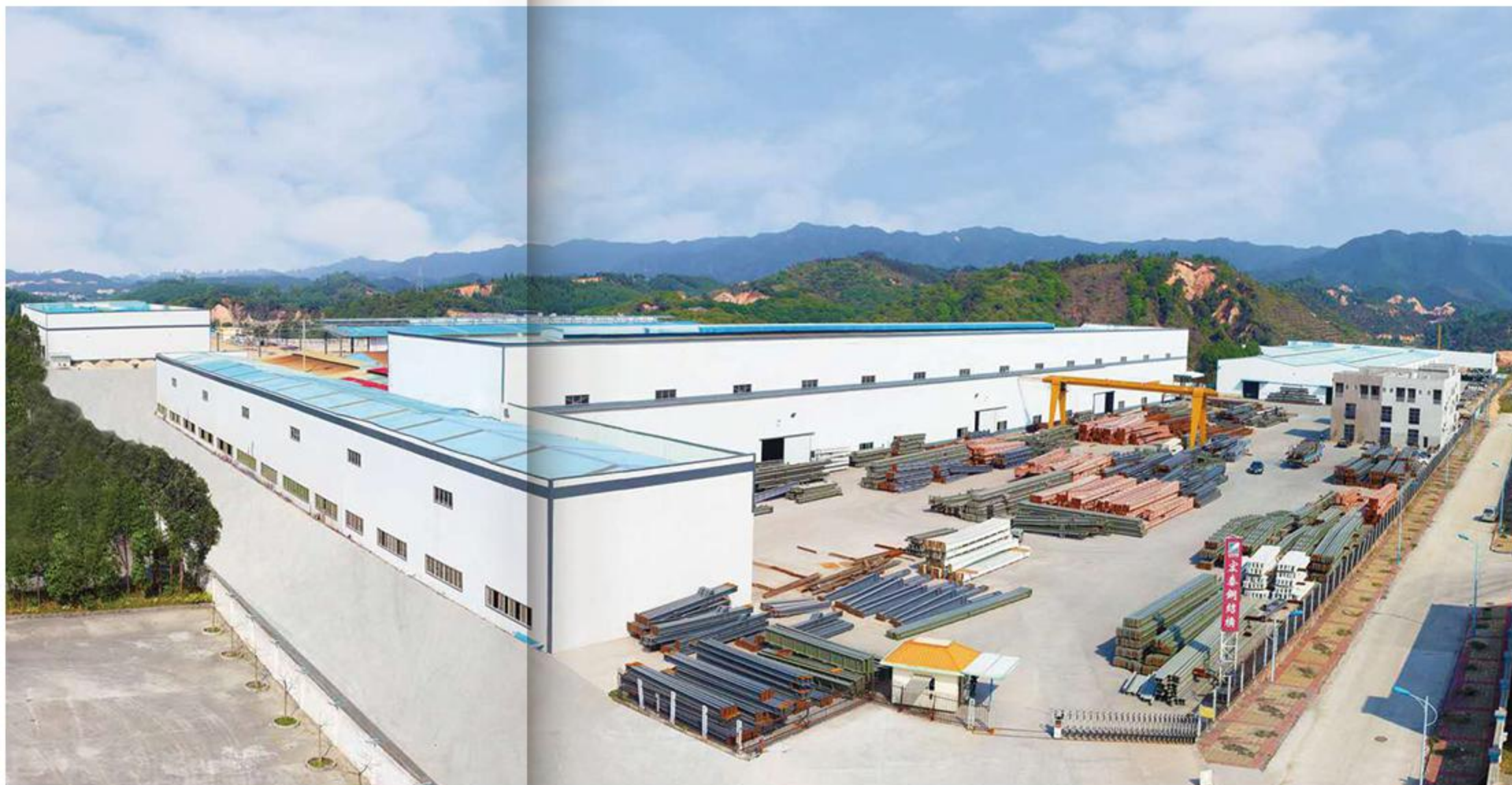
OUR FACTORY

► 我们的工厂

东莞市宏冶钢结构有限公司位于东莞市企石镇黄金积工业区，具备国家钢结构材料加工壹级资质，工程安装贰级资质，集设计、制作、销售、安装于一体。先后荣获“国家先进建筑业企业”“信誉AA级企业”。公司拥有3个大型钢结构材料加工厂，占地面积160000平方米，现有工厂制作人员1000多人，安装技术工50多人，中高级工程师以上人员23人，年生产能力120000吨。

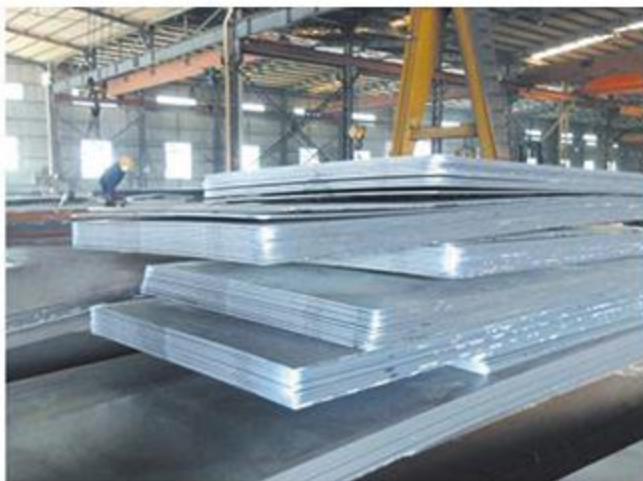
Dongguan Hongye Steel Structure Co., Ltd. is located in Jinjinli Industrial Zone, Qishi Town, Dongguan City. It has the first-class qualification of national steel structure material processing and the second-class qualification of engineering installation, integrating design, production, sales and installation. It has successively won the "National Advanced Construction Enterprise" and "Credit AA-level Enterprise".

The company has 3 large-scale steel structure material processing plants, covering an area of 160,000 square meters. At present, the factory has more than 1,000 production personnel, more than 50 installation technicians, and 23 senior engineers and above, with an annual production capacity of 120,000 tons.



ATELIER DE FABRICATION

▶ 生产车间



原材料仓库 Raw material warehouse



先进cnc数控切割 Raw Material Warehouse



大型自动组立 Large Automatic Assembly



重型矫正 Heavy Edge Rectifier



高门式埋弧焊 High Gate-type Arc Welding



先进高门电渣焊 Advanced High Gate Electroslag Welding

宏冶高效、快捷、有序的现代化管理，把工程失误控制在最小程度，确保产品的优良品质，为客户提供满意的服务。

Hongye's efficient, fast and orderly modern management minimizes engineering errors, ensures the excellent quality of products, and provides customers with satisfactory services.



接端板打孔制作 Connection Plate Punching



螺杆制作 Screw Manufacturing



铆工组合 Riveting Combination



高灵敏超声波探检 High Sesityty Ultrasonic Testing



大型喷砂除锈 Large Sandblasting Machine



宽敞涂装场 Spacious Coating Place

ATELIER DE FABRICATION

▶ 生产车间



维护系统车间一角 Corner Of Maintenance System Workshop



C型钢生产线 C-Beam Production Line



彩瓦生产线 Tile Production Line



夹心瓦生产线 Sandwich Tile Production Line



弧型瓦生产线 Arc Tile Production Line

宏冶拥有多条先进的自动生产流水线，生产设备均为进口的高端机械，在生产过程中所能达到的精确度均属于行业一流水准，只有这样才能领跑于市场。

Hongye has a number of advanced automatic production lines, and the production equipment is imported high-end machinery. The accuracy that can be achieved in the production process belongs to the first-class level in the industry, and only in this way can it lead the market.



复合墙板屋顶板泡板生产线 Compound Wall Roof Plate Foam Board Production Line



日式钢琉璃瓦生产线 Japanese Steel Glazed Production Line



西班牙式钢琉璃瓦生产线 Spanish Steel Roofing Productin Line



楼层板生产线 Floor Deck Production Line



478生产机 478 Production Machines

ATELIER DE FABRICATION

生产车间



大型弧形天桥 large curved bridge



国道天桥 National highway flyover



机场桥喷砂喷铝 (部分为室外制作)
Airport bridge sand blasting and aluminum blasting (partly made for outdoor production)



上沿行车: 25T Upper Crane: 25T
下沿行车: 5-10T Down Crane: 5-10T

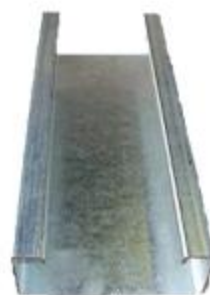
车间一角 workshop corner

Display of enclosure accessories

围护配件展示



重钢
Heavy Steel



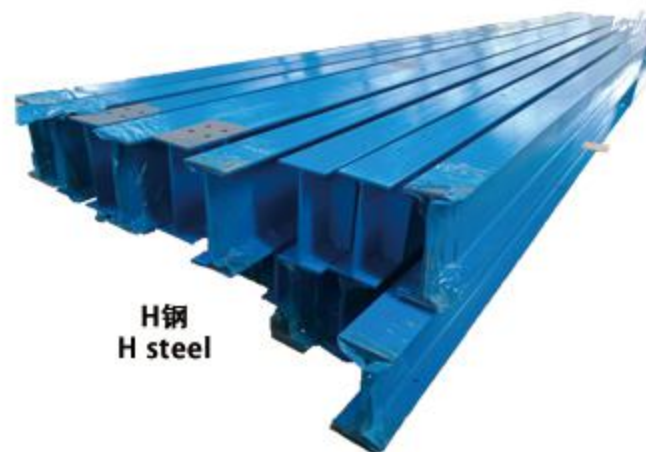
C型钢
C-shaped steel



Z型钢
Z-shaped steel



连系梁
Tie beam



H钢
H steel



气楼架
Gas building



玻璃棉
Glass wool



预埋螺栓
Embedded bolts



柱间支撑
Support between columns

Display of enclosure accessories

围护配件展示



高强螺丝
High strength screw



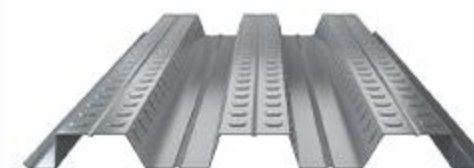
自攻螺丝
Self-tapping screws



通风球
Ventilation Ball



法兰螺栓
Flange bolts



楼承板
Floor Deck



采光瓦
Lighting tile



气楼瓦
Gas floor tiles



弧形瓦
Curved tile



760暗扣瓦
760 hidden buckle tile



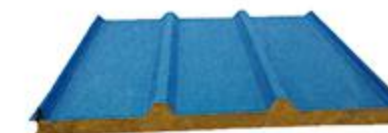
PU瓦
PU tile



PES夹心瓦
PES sandwich tile



屋面泡沫夹芯板
Roofing foam sandwich panel



岩棉夹芯板
Rock wool sandwich panel



夹芯板
Sandwich panel

ENGINEERING CASE

► 工程案例



Africa Mali Hardware Workshop

► 非洲马里五金车间 (28630m²)



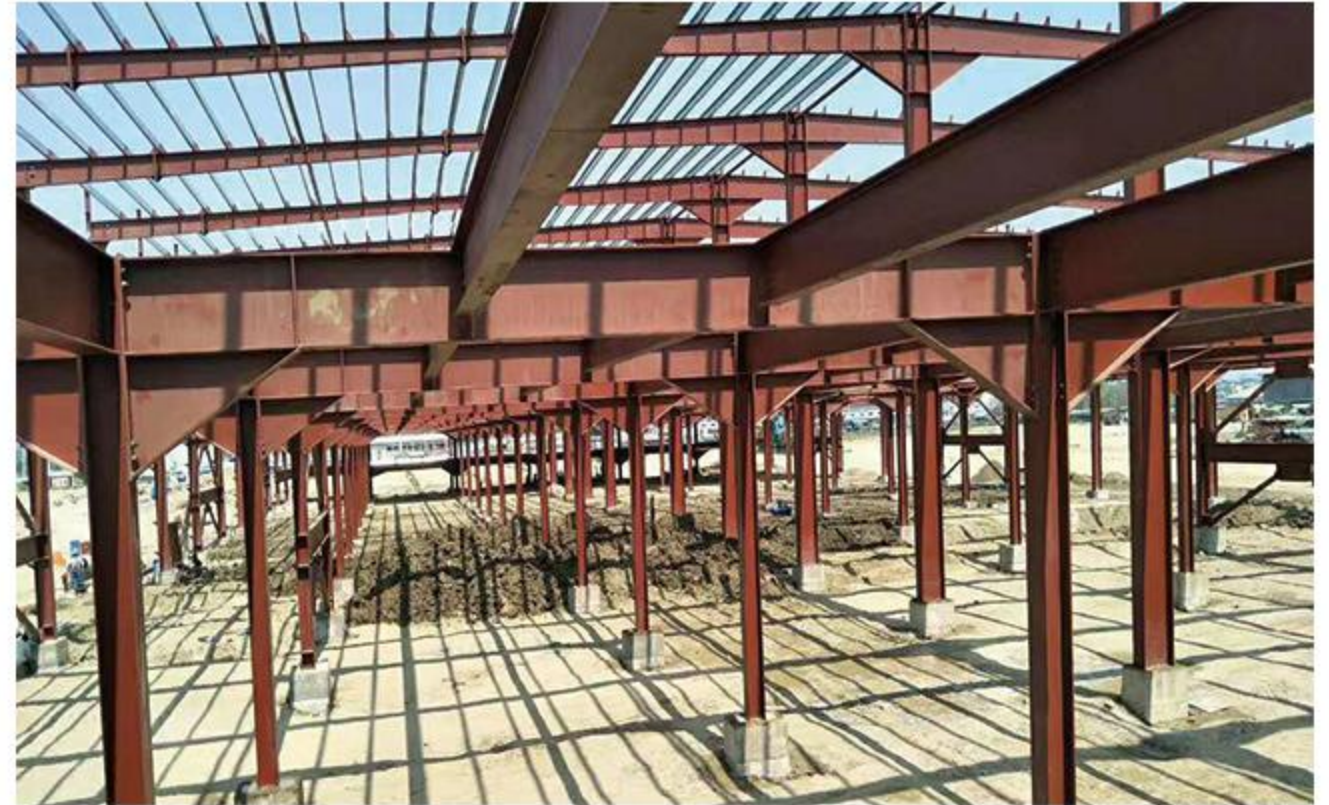
ENGINEERING CASE

► 工程案例



Myanmar two-storey hardware factory

► 缅甸两层五金厂房 (8600m²)



ENGINEERING CASE

► 工程案例



Nigeria Stone Processing Workshop

► 尼日利亚石材加工车间 (6320m²)



ENGINEERING CASE

► 工程案例



SKMTI预制钢仓库是由位于菲律宾首都马尼拉的11套30米跨度的门式钢结构仓库组成的项目。项目总面积16920平方米。总工期为八个月。这种预制钢仓库需要能够抵抗200公里/小时的台风，并且需要具有良好的隔热性能。因此，我们的设计师采用0.6mm彩钢板+50mm玻璃棉作为屋顶维护结构材料，每个仓库配备风塔和百叶窗，使室内温度维持在正常水平。此外，为了增加内部的透明度，我们在屋顶和墙壁上放置玻璃钢照明板，使仓库内部有充足的阳光。

Philippines SKMTI logistics warehouse

► 菲律宾SKMTI物流仓库 (17890m²)



SKMTI prefabricated steel warehouse is a project consisting of 11 sets of 30-meter-span portal steel structure warehouses located in Manila, the capital of the Philippines. The total project area is 16,920 square meters. The total construction period is eight months. This prefabricated steel warehouse needs to be able to withstand 200 km/h typhoons and needs to have good thermal insulation. Therefore, our designers use 0.6mm color steel plate + 50mm glass wool as the roof maintenance structural material, and each warehouse is equipped with wind towers and shutters to maintain the indoor temperature at a normal level. In addition, in order to increase the transparency of the interior, we put FRP lighting panels on the roof and walls, so that there is plenty of sunlight inside the warehouse.

ENGINEERING CASE

► 工程案例



钢结构出口伊拉克项目位于巴士拉省，客户是当地的建筑承接商，由于伊拉克战争已经基本结束，国内经济慢慢趋向稳定，所以当地的客户决定新建一栋钢结构车间来加工一些五金件，但多年的伊拉克战争摧毁了他们工业体系，他们现在很多建筑材料都非常依赖进口，而中东地区工业化国家很少，因此客户决定到中国来采购钢结构材料。

Iraqi Furniture Factory

► 伊拉克家私厂房 (1360m²)



The project of exporting steel structures to Iraq is located in Basra Province. The customer is a local construction contractor. Since the Iraq war has basically ended and the domestic economy has gradually stabilized, the local customer decided to build a new steel structure workshop to process some hardware, but for many years The Iraq War destroyed their industrial system, they are now very dependent on imports for many building materials, and there are very few industrialized countries in the Middle East, so the customer decided to come to China to purchase steel structure materials.

ENGINEERING CASE

► 工程案例



沙特钢结构项目位于中东沙特重要的石油城市达曼。该工程跨度25米，配备20吨吊车。这是一个炼油车间。我们的客户综合对比了混凝土车间和钢结构车间，发现钢结构车间不仅造价低，而且建设时间比混凝土结构厂房要短一半以上，因此最后业主决定到中国寻找供应商，而我们的规模和国外施工经验使得业主对我们非常认可，而我们对比其它厂家也拥有更多的优势，而这也是我们在中东地区的承接的众多工程项目之一。

Saudi hardware factory

► 沙特五金厂房 (2130m²)



The Saudi steel structure project is located in Dammam, an important oil city in Saudi Arabia in the Middle East. The project spans 25 meters and is equipped with a 20-ton crane. This is an oil refinery. Our client comprehensively compared the concrete workshop and the steel structure workshop, and found that the steel structure workshop is not only lower in cost, but also takes more than half of the construction time compared with the concrete structure workshop. Therefore, the owner finally decided to find a supplier in China, and our scale and foreign construction The experience has made the owners very recognized for us, and we have more advantages than other manufacturers, and this is also one of the many engineering projects we undertake in the Middle East.

ENGINEERING CASE

► 工程案例



Guangdong Shaoguan Textile Factory

► 广东韶关纺织厂 (4530m²)



ENGINEERING CASE

► 工程案例



Dongguan steel structure high-rise

► 东莞万江钢结构高层 (5850m²)



钢结构高层造型项目位于东莞上东国际花园酒店，工程主要有两部分，一部分是位于108米塔楼顶部，作为高层酒店造型采光顶，钢柱采用Q345B焊接箱型柱和无缝钢管，钢梁采用焊接H型钢，檩条采用Q235B的C型钢；另外一部分是裙楼顶部的钢结构采光顶，由方钢柱、H型钢梁、C型钢等构件组成。

The steel structure high-rise modeling project is located in Dongguan Shangdong International Garden Hotel. The project mainly consists of two parts. One is located at the top of the 108-meter tower, which is used as a high-rise hotel modeling lighting roof. The H-beam is welded, and the purlin is made of Q235B C-beam; the other part is the steel structure skylight at the top of the podium, which is composed of square steel columns, H-beams, C-beams and other components.

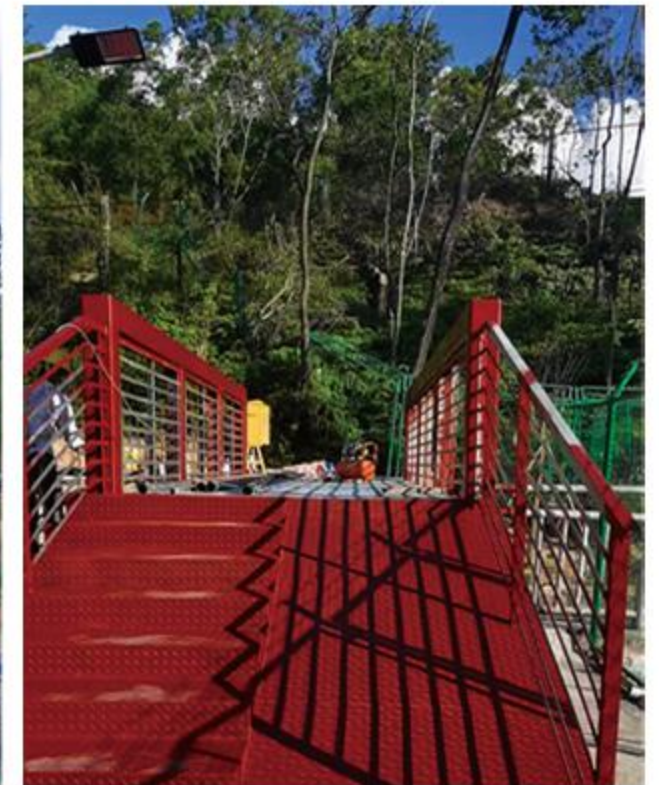
ENGINEERING CASE

► 工程案例



Park Municipal Project

► 公园市政项目 (825吨)





ENGINEERING CASE

► 工程案例



仓库项目位于加州旧金山。为了满足美国的要求，我们向当地设计师提供了相关材料的物理性质和化学成分。设计人员在计算通过后开始加工材料。材料生产完成后，客户还派人来检查材料的质量。符合要求后，安排集装箱。

California Steel Structure Warehouse

► 美国加州钢结构仓库100*48*9



The warehouse project is located in San Francisco, California. To meet U.S. requirements, we provided local designers with the physical properties and chemical composition of the relevant materials. The designer starts processing the material after the calculation is passed. After the material production is completed, the customer also sends someone to check the quality of the material. After meeting the requirements, arrange the container.